



**MATCHING AND SETTLEMENT**  
**Standards (ISO15022)**  
**SLOVENIA**  
**Market Practice**

|                     |          |
|---------------------|----------|
| Date:               | May 2012 |
| Update date:        | -        |
| Update. Impl. date: | -        |
| Author:             | SI NMPG  |



|          |  |           |
|----------|--|-----------|
| <b>1</b> | <b>INTRODUCTION.....</b>   | <b>4</b>  |
| 1.1      | PURPOSE .....  | 4         |
| 1.2      | AUDIENCE .....   | 4         |
| 1.3      | ASSUMED KNOWLEDGE .....  | 4         |
| 1.4      | DOCUMENT SCOPE .....   | 4         |
| 1.5      | DEFINITIONS .....  | 4         |
| <b>2</b> | <b>BUSINESS PROCESS DESCRIPTION .....</b>  | <b>5</b>  |
| 2.1      | GENERIC BUSINESS PROCESS DESCRIPTION .....   | 5         |
| 2.2      | RULES REGARDING THE MATCHING OF INSTRUCTIONS .....                                 | 7         |
| <b>3</b> | <b>FREE OF PAYMENT (FOP).....</b>  | <b>10</b> |
| 3.1      | FOP MESSAGE FLOW .....   | 10        |
| 3.2      | CANCELLATION OF FOP INSTRUCTION .....  | 10        |
| 3.3      | FOP INSTRUCTION STATE FLOW .....   | 11        |
| 3.4      | STATUS REPORTING.....  | 11        |
| <b>4</b> | <b>DELIVERY VERSUS PAYMENT (DVP) .....</b>   | <b>13</b> |
| 4.1      | DVP MESSAGE FLOW .....   | 13        |
| 4.2      | CANCELLATION OF DVP INSTRUCTION .....  | 13        |
| 4.3      | DVP INSTRUCTION STATE FLOW .....   | 14        |
| 4.4      | STATUS REPORTING.....  | 15        |
| <b>5</b> | <b>SETTLEMENT MESSAGES EXCHANGE.....</b>   | <b>16</b> |
| 5.1      | MT540 RECEIVE FREE / MT541 RECEIVE AGAINST PAYMENT .....                           | 16        |
| 5.2      | MT542 DELIVER FREE / MT543 DELIVER AGAINST PAYMENT .....                           | 17        |
| 5.3      | MT548 SETTLEMENT STATUS AND PROCESSING ADVICE .....                                | 18        |
| 5.4      | MT544 RECEIVE FREE CONFIRMATION / MT545 RECEIVE AGAINST PAYMENT CONFIRMATION.....  | 19        |
| 5.5      | MT546 DELIVER FREE CONFIRMATION / MT547 DELIVER AGAINST PAYMENT CONFIRMATION ..... | 20        |
| 5.6      | MT540-MT543 MESSAGE FIELDS .....   | 22        |
| 5.6.1    | <i>SEQUENCE A General Information.....</i>   | 22        |
| 5.6.2    | <i>SUBSEQUENCE A1 Linkages .....</i>   | 22        |
| 5.6.3    | <i>SEQUENCE B Trade Details.....</i>   | 22        |
| 5.6.4    | <i>SEQUENCE C Financial Instrument/Account.....</i>                                | 23        |
| 5.6.5    | <i>SEQUENCE E Settlement details.....</i>  | 23        |
| 5.6.6    | <i>SUBSEQUENCE E1 Buyer.....</i>   | 23        |
| 5.6.7    | <i>SUBSEQUENCE E1 Receiving agent.....</i>   | 24        |
| 5.6.8    | <i>SUBSEQUENCE E1 Seller.....</i>  | 24        |
| 5.6.9    | <i>SUBSEQUENCE E1 Delivering agent.....</i>  | 24        |
| 5.6.10   | <i>SUBSEQUENCE E1 Place of settlement.....</i>                                     | 25        |
| 5.6.11   | <i>SUBSEQUENCE E2 Cash Party.....</i>  | 25        |
| 5.6.12   | <i>SUBSEQUENCE E2 Cash Party.....</i>  | 25        |
| 5.6.13   | <i>SUBSEQUENCE E3 Amount.....</i>  | 25        |
| <b>6</b> | <b>SAMPLE SCENARIOS.....</b>   | <b>26</b> |
| 6.1      | SCENARIO 1.....  | 26        |
| 6.2      | SCENARIO 2.....  | 30        |



| <b>Changes to previous versions</b> |                 |  |  |
|-------------------------------------|-----------------|--|--|
| Version 1.0<br>May 2012             | New<br>document |  |  |

# 1 Introduction

## 1.1 Purpose

This document describes market practice regarding the usage of SWIFT messages for settlement of securities transactions in the Slovenian CSD. This document presents guidance for external systems which communicate with clearing and settlement system (CRVP System) of KDD. The document describes exchange of messages between Slovenian CSD (KDD) and external parties (KDD's participants) over SWIFT network in Free Of Payment (FOP) and Delivery Versus Payment (DVP) settlement scenarios.

## 1.2 Audience

This document is for technical staff responsible for connecting an external system to the CRVP System. It can also be used for self-instruction or as an everyday reference guide.

## 1.3 Assumed knowledge

This document was written with the assumption that users of the CRVP System have an understanding of the business flow of a CSD as well as ISO 15022 standard. If more information is required, we suggest consulting the SWIFT web page and documentation.

## 1.4 Document scope

This document contains description and flow of messages. The set up of connection over SWIFT network is outside of scope of this document.

## 1.5 Definitions

KDD – Slovenian CSD

CRVP – KDD's clearing and settlement system

FOP – Free Of Payment

DVP – Delivery Versus Payment

## 2 Business process description

### 2.1 Generic business process description

The processing of messages exchanged between KDD (CRVP) and external parties over SWIFT network in Free Of Payment (FOP) and Delivery Versus Payment (DVP) settlement scenarios is carried out according to the following steps:

1. Instructing party sends its settlement instruction via SWIFT to CRVP.

Trade date and settlement date can be set to up to 60 calendar days in the past from the date of submission of the instruction.

Trade date and settlement date can be set to up to 30 calendar days in the future from the date of submission of the instruction.

2. CRVP performs settlement instruction validation. In case of **negative validation** CRVP rejects the settlement instruction and informs the instructing party.
3. In case of **positive validation** of settlement instruction CRVP immediately searches in the repository of unmatched settlement instructions for those counterparty instructions that have the same mandatory matching fields values (this process is called matching; for details please see chapter 2.2).
4. If **matching is not successful**, the settlement instruction is placed in the repository of unmatched settlement instructions waiting for the matching instruction. Each member is able to see outgoing (delivering) and incoming (receiving) unmatched instructions regarding its securities accounts (house/client) via CRVP GUI and Web services.

Unmatched settlement instructions remain in the repository of unmatched settlement instructions for 20 business days from the later of the intended settlement date or the date of the submission of the settlement instruction, after which date, if the trade is still valid, the trade should be re-instructed with original trade and settlement dates.

Unmatched settlement instruction can also be unilaterally cancelled by the instructing party using corresponding MT message.

5. If **matching is successful**, the matched settlement instructions are (immediately or at the start of their intended settlement date) forwarded to settlement according to the following:

- a. **For FOP transactions**, the settlement is attempted immediately.

If settlement attempt is **not successful**, the respective settlement instructions are returned to the queue (matched-unsettled instructions). Further settlement attempts are carried out in subsequent

cycles (recycling of instructions) for unlimited period of time with frequency defined in KDD regulations until successful settlement **or** until cancellation of respective settlement instructions by both parties using corresponding MT message.

- b. **For DVP transactions**, the reservation of securities on the account of the seller is attempted.

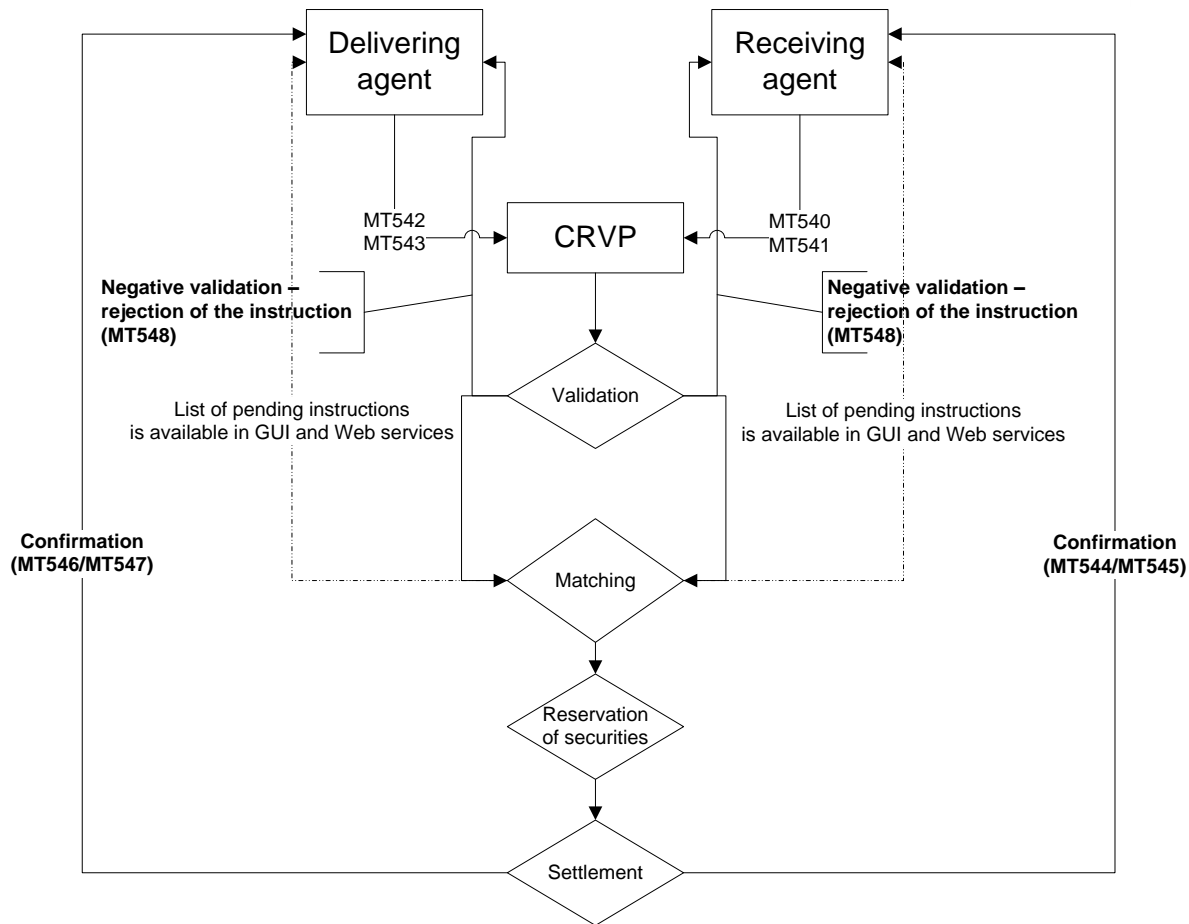
If the reservation is **not successful** (insufficient balance on the securities account of the seller), the respective settlement instructions are returned to the queue (matched-unsettled instructions). Further reservation attempts are carried out in subsequent cycles (recycling of instructions) for unlimited period of time with frequency defined in KDD regulations until successful reservation **or** until cancellation of respective settlement instructions by both parties using corresponding MT message.

If the reservation **is successful** CRVP returns to the receiving agent the reference code that has to be used for cash leg settlement. Afterwards the settlement process is waiting for the buyer to provide cash payment to the KDD's TARGET2 settlement account.

The waiting time for the buyer to provide cash payment is not limited but can be stopped by unilateral cancellation of settlement instruction of the delivering agent by sending KDD cancellation request according to KDD regulations. This unilateral cancellation can only take place until the buyer provided cash payment to the KDD's TARGET2 settlement account, at which point the settlement process is started in CRVP. If the settlement instruction is successfully cancelled, the securities in the seller's account are released.

6. After CRVP receives notification of the payment made by the buyer to the KDD's TARGET2 account, the settlement procedure is started. Reserved securities are transferred from the seller's securities account to the buyer's securities account in CRVP and the cash is transferred from the KDD's TARGET2 account to the seller's account in TARGET2.
7. **In case of applicable corporate actions, as defined in KDD regulations**, all pending instructions (unmatched or matched) regarding the respective ISIN **are automatically cancelled by the system** and have to be, if still valid, re-instructed by the instructing parties.

The following figure is a simplified graphical representation of generic business process described above.



## 2.2 Rules regarding the matching of instructions

Matching is the process of comparing instruction details for settlement provided by the counterparties to ensure that they agree with respect to the terms of the transaction. The result of successful matching is a pair of matched settlement instructions.

Matching in CRVP is based on the matching standards issued by European Securities Forum and European Central Securities Depositories Association (ESF and ECSDA, Proposal to harmonise and standardise pre-settlement date matching processes throughout Europe, October 2006), with some exceptions as described below.

CRVP provides **real-time matching** facilities throughout the business day as defined in KDD's rules and regulations.

Matching is carried out in line with the following rules:

1. Matching is carried out for the following transactions:
  - a. DVPInstruction
  - b. InterMemberDifferentInvestorMovement
  - c. InterMemberSameInvestorMovement

- d. IntraMemberDifferentInvestorMovement
  - e. IntraMemberSameInvestorMovement
  - f. TransferInactiveSecurities
  - g. ExecutePledge
  - h. ExecutePreemptiveRight
  - i. ExecuteRedemptionRight
2. Matching is carried out for intra-member (one member instructs both settlement instructions) and inter-member transactions.
  3. Instruction amendment function is not provided (the instructing party has to cancel old and instruct a new settlement instruction).
  4. Allegement function is not provided in the form of messages; however the counterparty is able to see unmatched settlement instructions via the CRVP GUI and Web services.
  5. CRVP matches the settlement amount with a certain tolerance level (i.e. in the event that there is no perfect match). The tolerance amount has two different bands, depending on the value. Once CRVP has matched two instructions with a difference in the settlement amount that is less than the tolerance amount, CRVP shall settle the instruction with the buyer's settlement amount.

The general tolerance amount for matching the settlement amount field is €25 when the settlement amount is above €100,000 or €2 when it is €100,000 or less. In case the relevant tolerances of two settlement amounts are not equal, the more restrictive one applies.

If there are more matching settlement instructions with settlement amount difference within the band of the tolerance amount, CRVP matches the instructions where the difference in the amounts is the smallest.

When there are more than two identified unmatched settlement instructions with equal values for the matching fields and the same values for the settlement amount within the band of the tolerance amount, CRVP selects the unmatched settlement instructions which have the oldest entry time in CRVP.

6. Unmatched settlement instructions remain in the repository of unmatched settlement instructions until unilateral cancellation by instructing party (see below) **or** for 20 business days from the later of the settlement date **or** the date of the submission of the settlement instruction, after which date, if the trade is still valid, the trade should be re-instructed with original trade and settlement dates.

For matched settlement instructions, reservation/settlement attempts are carried out in subsequent cycles (recycling of instructions) for unlimited period of time until successful reservation/settlement or until cancellation of respective settlement instructions by both parties (see below).

**In case of applicable corporate actions, as defined in KDD regulations,** all pending instructions (unmatched or matched) regarding the respective ISIN are automatically cancelled by the system and have to be, if still valid, re-instructed by the instructing parties.

7. Cancellation of settlement instructions by instructing parties is possible according to the following rules:





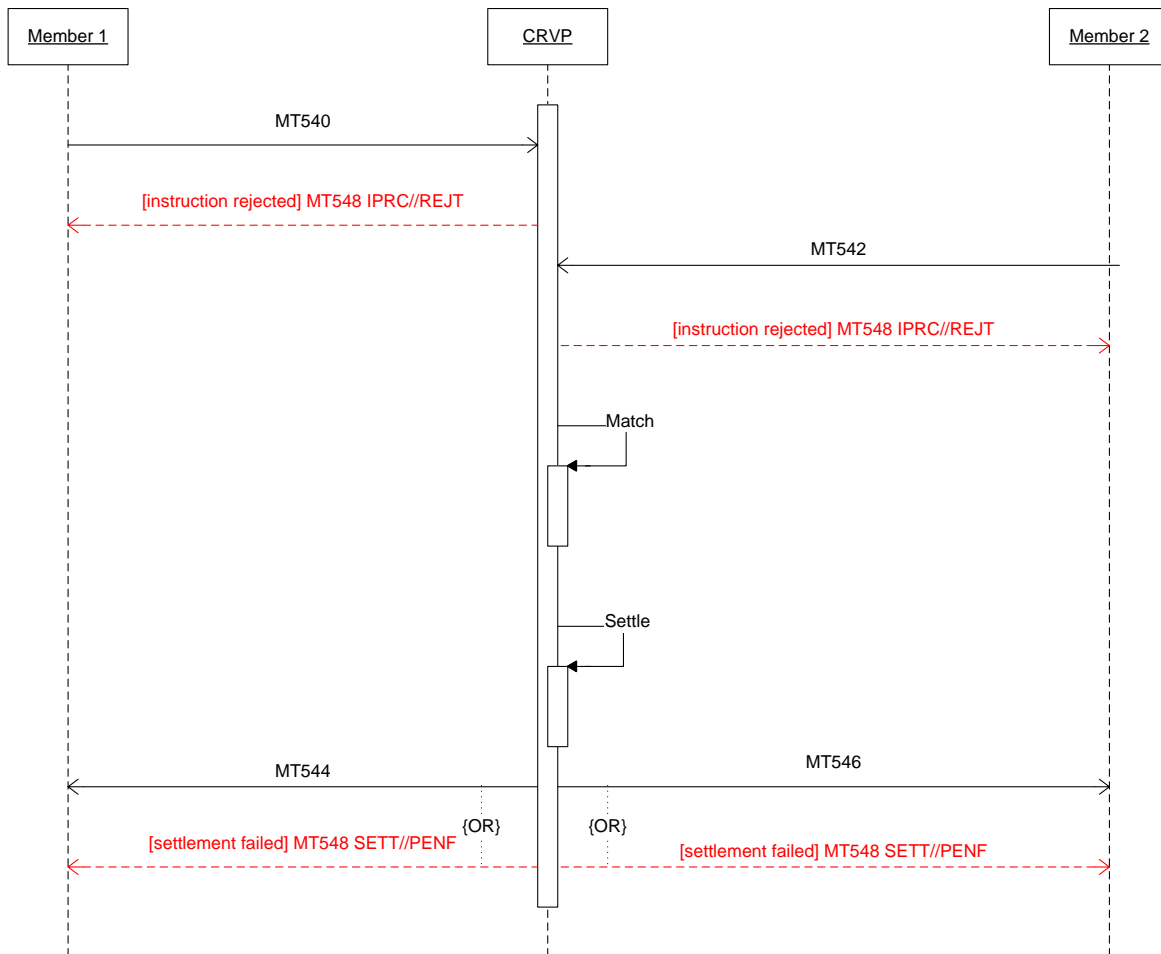
- Unmatched settlement instructions can be unilaterally cancelled by the instructing party using corresponding MT message.
  - Matched FOP instructions: both parties have to cancel their settlement instructions using corresponding MT message.
  - Matched DVP instructions: until successful reservation of securities on the seller’s account, both parties have to cancel their settlement instructions using corresponding MT message. After successful reservation of securities on the seller’s account and before the buyer provides cash payment to the KDD’s TARGET2 account the delivering agent can unilaterally cancel the settlement instruction by sending cancellation request in line with operational rules.
8. Information on the settlement instruction status is available in CRVP GUI and Web services.
9. The following fields are mandatory for matching (per ECSDA recommendation).

| Field   | ISO15022                                   |
|---|--|
| Intended Settlement date  | 98A::SETT//8!n                             |
| Trade date  | 98A::TRAD//8!n                             |
| Settlement amount (for DVP)   | 19A::SETT//3!a15d                          |
| Quantity of FI to be settled  | 36B::SETT//4!c/15d                         |
| Financial instrument identification   | 35B::ISIN1!e12!c                           |
| Buy/sell  | MT54x message type                         |
| Counterparty  | 95P::DEAG or<br>REAG//4!a2!a2!c            |
| Client of the delivering/receiving agent identified by account to be debited/credited | 95Q::SELL or BUYR<br>and<br>97A::SAFE//35x |

10. In case securities are blocked (e.g. pledged) both instructing parties must specify account and subaccount to be debited as well as type of operation and order number when necessary. This information is also matched.
11. Above is defined in KDD’s rules and regulations.

### 3 Free of Payment (FOP)

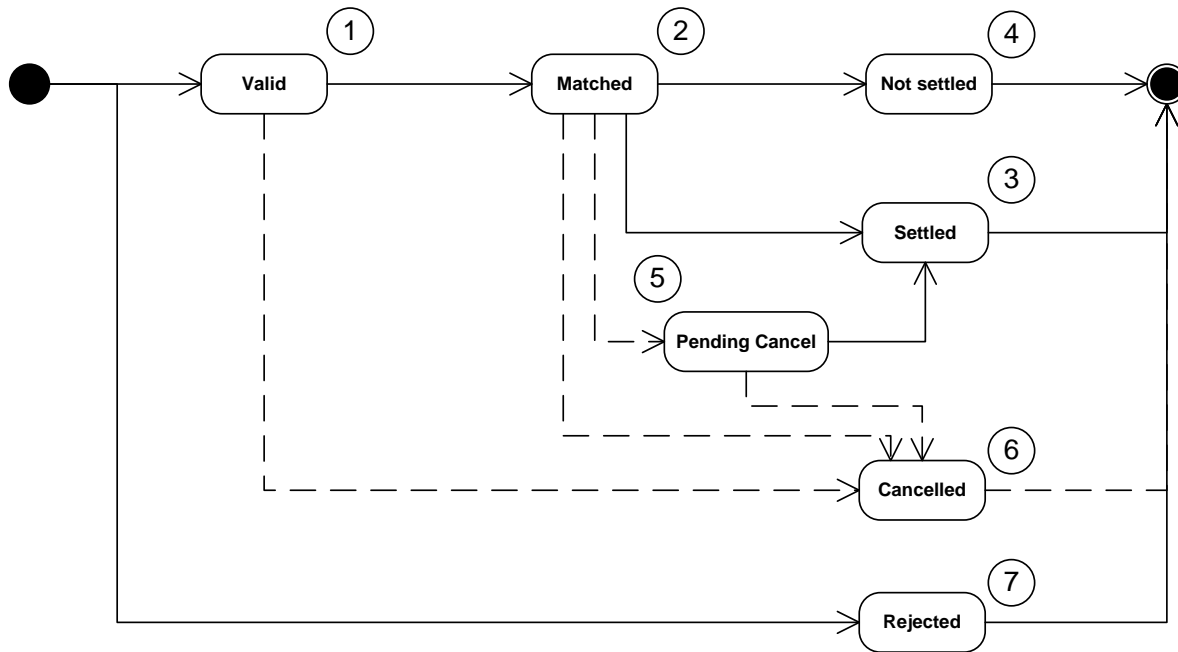
#### 3.1 FOP MESSAGE FLOW



#### 3.2 Cancellation of FOP instruction

To cancel a previously sent message, a new message with Function of the message CANC must be sent. The reference in the linkages sequence must contain the Sender's reference of the message to be cancelled. A copy of at least the mandatory fields of the message to be cancelled must be present.

### 3.3 FOP Instruction State Flow



Settlement instructions can have the following statuses:

| Lp | Status         | Description   |
|----|----------------|---|
| 1  | Valid          | The instruction has been received and validated. Awaiting counterparty's instruction.   |
| 2  | Matched        | The instruction has been matched with counterparty's instruction.   |
| 3  | Settled        | Settlement has been successfully completed. The sender of the instruction receives MT544/MT546 with confirmation.   |
| 4  | Not settled    | Settlement failed. Both instructing parties receive MT548 with failure reason. Currently CRVP will recycle instructions until successfully settled or cancelled. As a result, this status cannot appear in the system and is reserved for future use.   |
| 5  | Pending Cancel | Matched instruction has been cancelled by one side. Awaiting cancel from counterparty. The sender of the cancellation instruction receives MT548 with notification. Matched instructions cancelled by one side only are still eligible for settlement and can settle as long as they have not been cancelled by both parties. |
| 6  | Cancelled      | The instruction has been cancelled by the instructing party or CRVP. The sender of the instruction receives MT548 with notification.  |
| 7  | Rejected       | The instruction has been rejected by the CRVP. The sender of the instruction receives MT548 with failure reason.  |

### 3.4 Status reporting

Upon successful completion of settlement CRVP will send MT544/MT546 confirmation to instructing parties. MT548 will only be sent if CRVP is not able to successfully process instruction at any stage.

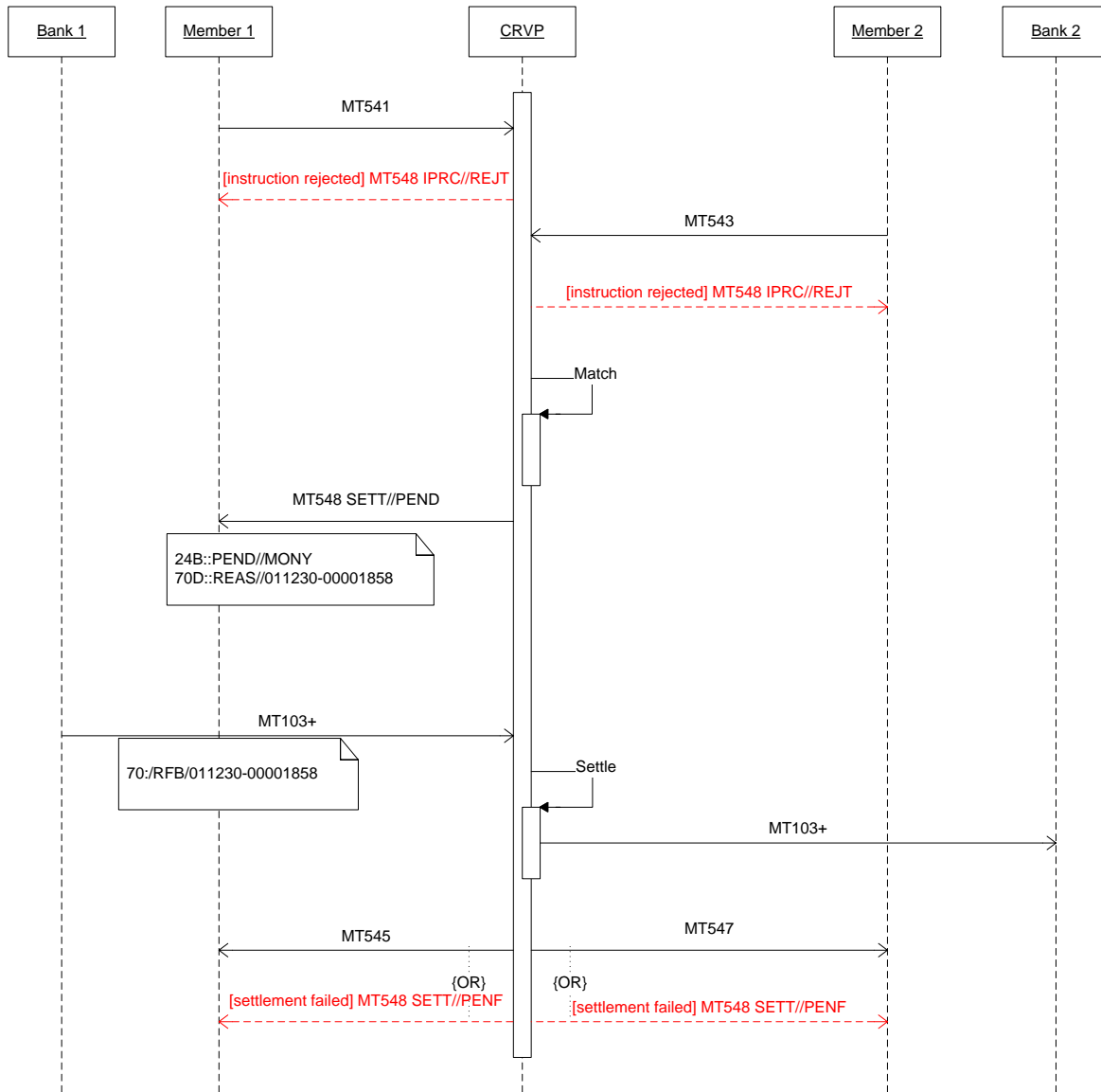
The following table contains examples of possible MT548 statuses and reasons fields (25D:: and 24B::) at different stages of processing



| Stage          | Status/Reason   | Description  |
|----------------|---|--|
| Rejected       | 25D::IPRC//REJT<br>24B::REJT//<code><br>(optional)70D::REAS//<text> | <code> describing reason why instruction was rejected<br><text> sent when instruction has been rejected by the system and information cannot be provided in a structured field |
| Pending Cancel | 25D::CPRC//CANP<br>24B::CANP//CONF                                  | Awaiting confirmation of cancellation from the counterparty.   |
| Cancelled      | 25D::CPRC//CAND<br>24B::CAND//CANI                                  | Instruction has been cancelled by the instructing party.<br>Sent as a response to cancellation request (per smpg recommendation)   |
|                | 25D::IPRC//CAND<br>24B::CAND//CORP                                  | Instruction has been cancelled by the system because of corporate action   |
|                | 25D::IPRC//CAND<br>24B::CAND//EXPI                                  | Instruction has been cancelled by the system because it has expired  |
|                | 25D::IPRC//CAND<br>24B::CAND//NARR<br>70D::REAS//<text>             | <text> sent when instruction has been cancelled by the system and information cannot be provided in a structured field   |
| Not settled    | 25D::SETT//PENF<br>24B::PENF//<code>                                | <code> describing reason why settlement failed   |

# 4 Delivery Versus Payment (DVP)

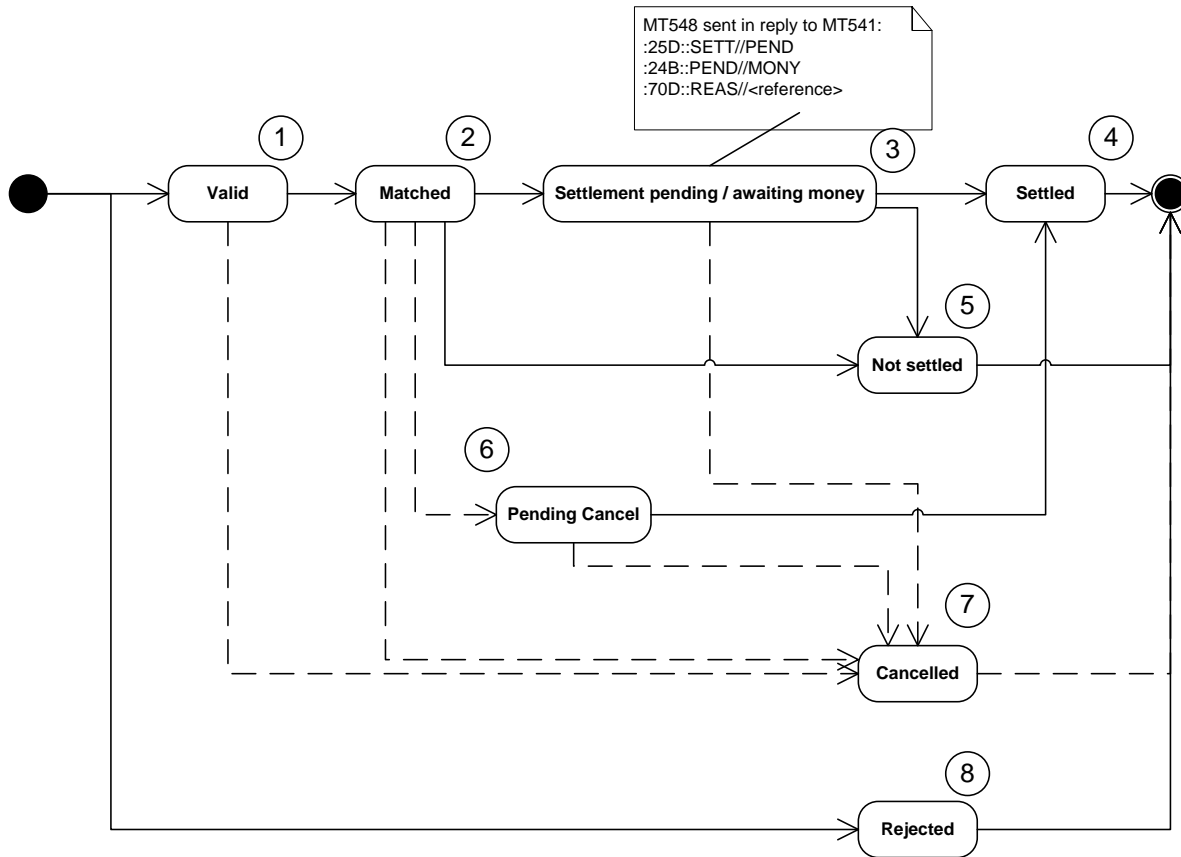
## 4.1 DVP Message FLOW



## 4.2 CANCELLation of DVP instruction

To cancel a previously sent message, a new message with Function of the message CANC must be sent. The reference in the linkages sequence must contain the Sender's reference of the message to be cancelled. A copy of at least the mandatory fields of the message to be cancelled must be present.

### 4.3 DVP INSTRUCTION STATE FLOW



Settlement instructions can have the following statuses:

| Lp | Status                              | Description   |
|----|-------------------------------------|---|
| 1  | Valid                               | The instruction has been received and validated. Awaiting counterparty's instruction.   |
| 2  | Matched                             | The instruction has been matched with counterparty's instruction.   |
| 3  | Settlement pending / awaiting money | Awaiting payment. MT548 with reference for cash payment has been sent to REAG.  |
| 4  | Settled                             | Settlement has been successfully completed. The sender of the instruction receives MT545/MT547 with confirmation.   |
| 5  | Not settled                         | Settlement failed. Both instructing parties receive MT548 with failure reason. Currently CRVP will recycle instructions until successfully settled or cancelled. As a result, this status cannot appear in the system and is reserved for future use.   |
| 6  | Pending Cancel                      | Matched instruction has been cancelled by one side. Awaiting cancel from counterparty. The sender of the cancellation instruction receives MT548 with notification. Matched instructions cancelled by one side only are still eligible for settlement and can settle as long as they have not been cancelled by both parties. |
| 7  | Cancelled                           | The instruction has been cancelled by the instructing party or CRVP. The sender of the instruction receives MT548 with notification.  |

|   |          |  |
|---|----------|--|
| 8 | Rejected | The instruction has been rejected by the CRVP. The sender of the instruction receives MT548 with failure reason. |
|---|----------|--|

#### 4.4 Status reporting

Upon successful completion of settlement CRVP will send MT545/MT547 confirmation to instructing parties. MT548 (with the exception of message containing reference notification) will only be sent if CRVP is not able to successfully process instruction at any stage.

The following table contains examples of possible MT548 statuses and reasons fields (25D:: and 24B::) at different stages of processing

| Stage                               | Status/Reason   | Description  |
|-------------------------------------|---|--|
| Rejected                            | 25D::IPRC//REJT<br>24B::REJT//<code><br><br>(optional)70D::REAS//<text> | <code> describing reason why instruction was rejected<br><br><text> sent when instruction has been rejected by the system and information cannot be provided in a structured field |
| Pending Cancel                      | 25D::CPRC//CANP<br>24B::CANP//CONF                                      | Awaiting confirmation of cancellation from the counterparty.   |
| Cancelled                           | 25D::CPRC//CAND<br>24B::CAND//CANI                                      | Instruction has been cancelled by the instructing party.<br><br>Sent as a response to cancellation request. (per smpg recommendation)  |
|                                     | 25D::IPRC//CAND<br>24B::CAND//CORP                                      | Instruction has been cancelled by the system because of corporate action   |
|                                     | 25D::IPRC//CAND<br>24B::CAND//EXPI                                      | Instruction has been cancelled by the system because it has expired  |
|                                     | 25D::IPRC//CAND<br>24B::CAND//NARR<br>70D::REAS//<text>                 | <text> sent when instruction has been cancelled by the system and information cannot be provided in a structured field   |
| Settlement pending / awaiting money | 25D::SETT//PEND<br>24B::PEND//MONY<br>70D::REAS//<reference>            | This MT548 will only be sent as a reply to MT541. <reference> must be copied verbatim into field :70:/RFB/ of MT103+ in payment for the financial instruments.                     |
| Not settled                         | 25D::SETT//PENF<br>24B::PENF//<code>                                    | <code> describing reason why settlement failed   |

## 5 Settlement MESSAGES Exchange

Settlement instructions accepted by CRVP are ISO15022 messages. The exchange of messages and their content follows industry recommendations and standards while providing for specifics of CRVP business model (direct holding). Fields, which are not described in this specification, are not relevant for CRVP matching and settlement process and as such are ignored by the system. In particular, MT540-MT543 Sequences D and F are ignored entirely and not returned in their respective MT544-MT547.

### 5.1 MT540 Receive Free / MT541 Receive Against Payment

| Status  | Tag                  | Qualifier | Description  | Content/Options   | Example                                     |
|---|----------------------|-----------|--|---|---|
| <b>Mandatory Sequence A General Information</b>   |                      |           |  |   |   |
| M   | :16R:                |           | Start of Block   | <b>GENL</b>   | <b>GENL</b>                                 |
| M   | :20C:                | SEME      | Sender's reference                                     | <b>SEME//16x</b>  | <b>SEME//000002AAA0106123</b>               |
| M   | :23G:                |           | Function of the message – new trade or cancellation    | <b>NEWM or CANC</b>                                     | <b>NEWM or CANC</b>                         |
| <b>Subsequence A1 – Linkages – Mandatory in cancellation and applicable only in cancellation!</b> |                      |           |  |   |   |
| M   | :16R:                |           | Start of Block   | <b>LINK</b>   | <b>LINK</b>                                 |
| M   | :20C:                | PREV      | Reference – TAG :20C: of MT540/MT541 to be cancelled   | <b>PREV//16x</b>  | <b>PREV//000002AAA0106123</b>               |
| M   | :16S:                |           | End of Block   | <b>LINK</b>   | <b>LINK</b>                                 |
| <b>End of subsequence A1</b>  |                      |           |  |   |   |
| M   | :16S:                |           | End of Block   | <b>GENL</b>   | <b>GENL</b>                                 |
| <b>End of sequence A General Information</b>  |                      |           |  |   |   |
| <b>Mandatory Sequence B Trade Details</b>   |                      |           |  |   |   |
| M   | :16R:                |           | Start of Block   | <b>TRADEDET</b>   | <b>TRADEDET</b>                             |
| M   | :98A:                | SETT      | Settlement date  | <b>SETT//8!n</b>  | <b>SETT//20061104</b>                       |
| M   | :98A:                | TRAD      | Trade date   | <b>TRAD//8!n</b>  | <b>TRAD//20061102</b>                       |
| M   | :35B:                |           | Identification of Financial Instrument                 | <b>ISIN1!e12!c</b>                                      | <b>ISIN SI1234567891</b>                    |
| O   | :70E:                | SPRO      | Settlement Instruction Processing Narrative            | <b>SPRO//5!a/5n[/15n]</b>                               | <b>SPRO//EXEPL/2/1234</b>                   |
| M   | :16S:                |           | End of Block   | <b>TRADEDET</b>   | <b>TRADEDET</b>                             |
| <b>End of sequence B Trade Details</b>  |                      |           |  |   |   |
| <b>Mandatory Sequence C Financial Instrument/Account</b>  |                      |           |  |   |   |
| M   | :16R:                |           | Start of Block   | <b>FIAC</b>   | <b>FIAC</b>                                 |
| M   | :36B:                | SETT      | Quantity of Financial Instrument to be settled         | <b>SETT//UNIT/15d</b><br>or<br><b>SETT//FAMT/15d</b>    | <b>SETT//UNIT/123,</b>                      |
| M   | :97A:                | SAFE      | Safekeeping Account to be credited or debited          | <b>SAFE//35x</b>  | <b>SAFE//1234565</b>                        |
| M   | :16S:                |           | End of Block   | <b>FIAC</b>   | <b>FIAC</b>                                 |
| <b>End of Sequence C Financial Instrument/Account</b>   |                      |           |  |   |   |
| <b>Mandatory Sequence E Settlement details</b>  |                      |           |  |   |   |
| M   | :16R:                |           | Start of Block   | <b>SETDET</b>   | <b>SETDET</b>                               |
| M   | :22F:                |           | Trade indicator  | <b>SETR//TRAD</b>                                       | <b>SETR//TRAD</b>                           |
| <b>Mandatory Subsequence E1 Seller</b>  |                      |           |  |   |   |
| M   | :16R:                |           | Start of Block   | <b>SETPRTY</b>  | <b>SETPRTY</b>                              |
| M   | :95P:<br>or<br>:95Q: |           | Seller Name and address ( <b>unprocessed by KDD!</b> ) | <b>SELL//4!a2!a2!c[3!c]</b><br>or<br><b>SELL//4*35x</b> | <b>SELL//Seller Name<br/>Seller Address</b> |



|  |                      |      |                        |   |                       |
|--|----------------------|------|------------------------|---|-----------------------|
| M  | :97A:                | SAFE | Safekeeping Account    | <b>SAFE//35x</b>  | <b>SAFE//7777770</b>  |
| M  | :16S:                |      | End of Block           | <b>SETPRTY</b>  | <b>SETPRTY</b>        |
| <b>End of Subsequence E1 Seller</b>                                |                      |      |                        |   |                       |
| <b>Mandatory Subsequence E1 Delivering agent (KDD member)</b>      |                      |      |                        |   |                       |
| M  | :16R:                |      | Start of Block         | <b>SETPRTY</b>  | <b>SETPRTY</b>        |
| M  | :95P:<br>or<br>:95R: |      | Delivering agent's BIC | <b>DEAG//4!a2!a2!c[3!c]</b><br>or<br><b>DEAG/KDDS/34x</b> | <b>DEAG//DEDESI22</b> |
| M  | :16S:                |      | End of Block           | <b>SETPRTY</b>  | <b>SETPRTY</b>        |
| <b>End of Subsequence E1 Delivering agent</b>                      |                      |      |                        |   |                       |
| <b>Mandatory Subsequence E1 Place of Settlement</b>                |                      |      |                        |   |                       |
| M  | :16R:                |      | Start of Block         | <b>SETPRTY</b>  | <b>SETPRTY</b>        |
| M  | :95P:                |      | KDD's BIC              | <b>PSET//4!a2!a2!c[3!c]</b>                               | <b>PSET//KDDSSI22</b> |
| M  | :16S:                |      | End of Block           | <b>SETPRTY</b>  | <b>SETPRTY</b>        |
| <b>End of Subsequence E1 Place of Settlement</b>                   |                      |      |                        |   |                       |
| <b>Mandatory Subsequence E3 Amount (applicable only in MT541!)</b> |                      |      |                        |   |                       |
| M  | :16R:                |      | Start of Block         | <b>AMT</b>  | <b>AMT</b>            |
| M  | :19A:                |      | Amount                 | <b>SETT//3!a15d</b>                                       | <b>SETT//EUR100,</b>  |
| M  | :16S:                |      | End of Block           | <b>AMT</b>  | <b>AMT</b>            |
| <b>End of Subsequence E3 Amount</b>                                |                      |      |                        |   |                       |
| M  | :16S:                |      | End of Block           | <b>SETDET</b>   | <b>SETDET</b>         |
| <b>End of Sequence E Settlement details</b>                        |                      |      |                        |   |                       |

## 5.2 MT542 DELIVER FREE / MT543 Deliver Against Payment

| Status  | Tag   | Qualifier | Description  | Content/Options       | Example                       |
|---|-------|-----------|--|-----------------------|-------------------------------|
| <b>Mandatory Sequence A General Information</b>   |       |           |  |                       |                               |
| M   | :16R: |           | Start of Block                                       | <b>GENL</b>           | <b>GENL</b>                   |
| M   | :20C: | SEME      | Sender's reference                                   | <b>SEME//16x</b>      | <b>SEME//000002AAA0106123</b> |
| M   | :23G: |           | Function of the message – new trade or cancellation  | <b>NEWM or CANC</b>   | <b>NEWM or CANC</b>           |
| <b>Subsequence A1 – Linkages – Mandatory in cancellation and applicable only in cancellation!</b> |       |           |  |                       |                               |
| M   | :16R: |           | Start of Block                                       | <b>LINK</b>           | <b>LINK</b>                   |
| M   | :20C: | PREV      | Reference – TAG :20C: of MT542/MT543 to be cancelled | <b>PREV//16x</b>      | <b>PREV//000002AAA0106123</b> |
| M   | :16S: |           | End of Block   | <b>LINK</b>           | <b>LINK</b>                   |
| <b>End of subsequence A1</b>  |       |           |  |                       |                               |
| M   | :16S: |           | End of Block   | <b>GENL</b>           | <b>GENL</b>                   |
| <b>End of sequence A General Information</b>  |       |           |  |                       |                               |
| <b>Mandatory Sequence B Trade Details</b>   |       |           |  |                       |                               |
| M   | :16R: |           | Start of Block                                       | <b>TRADEDET</b>       | <b>TRADEDET</b>               |
| M   | :98A: | SETT      | Settlement date                                      | <b>SETT//8!n</b>      | <b>SETT//20061104</b>         |
| M   | :98A: | TRAD      | Trade date   | <b>TRAD//8!n</b>      | <b>TRAD//20061102</b>         |
| M   | :35B: |           | Identification of Financial Instrument               | <b>ISIN1!e12!c</b>    | <b>ISIN SI1234567891</b>      |
| M   | :16S: |           | End of Block   | <b>TRADEDET</b>       | <b>TRADEDET</b>               |
| <b>End of sequence B Trade Details</b>  |       |           |  |                       |                               |
| <b>Mandatory Sequence C Financial Instrument/Account</b>  |       |           |  |                       |                               |
| M   | :16R: |           | Start of Block                                       | <b>FIAC</b>           | <b>FIAC</b>                   |
| M   | :36B: | SETT      | Quantity of Financial                                | <b>SETT//UNIT/15d</b> | <b>SETT//UNIT/123,</b>        |

|   |                      |      |  |   |   |
|---|----------------------|------|--|---|---|
|   |                      |      | Instrument to be settled                               | or<br><b>SETT//FAMT/15d</b>                               |   |
| M   | :97A:                | SAFE | Safekeeping Account to be credited or debited          | <b>SAFE//35x</b>  | <b>SAFE//7777770</b>                                  |
| M   | :16S:                |      | End of Block   | <b>FIAC</b>   | <b>FIAC</b>   |
| <b>End of Sequence C Financial Instrument/Account</b>                 |                      |      |  |   |   |
| <b>Mandatory Sequence E Settlement details</b>                        |                      |      |  |   |   |
| M   | :16R:                |      | Start of Block   | <b>SETDET</b>   | <b>SETDET</b>   |
| M   | :22F:                |      | Trade indicator  | <b>SETR//TRAD</b>   | <b>SETR//TRAD</b>                                     |
| <b>Mandatory Subsequence E1 Buyer</b>                                 |                      |      |  |   |   |
| M   | :16R:                |      | Start of Block   | <b>SETPRTY</b>  | <b>SETPRTY</b>  |
| M   | :95P:<br>or<br>:95Q: |      | Buyer Name and address<br><b>(unprocessed by KDD!)</b> | <b>BUYR//4!a2!a2!c[3!c]</b><br>or<br><b>BUYR//4*35x</b>   | <b>BUYR//Buyer Name</b><br>Buyer Address              |
| M   | :97A:                | SAFE | Safekeeping Account                                    | <b>SAFE//35x</b>  | <b>SAFE//1234565</b>                                  |
| M   | :16S:                |      | End of Block   | <b>SETPRTY</b>  | <b>SETPRTY</b>  |
| <b>End of Subsequence E1 Buyer</b>                                    |                      |      |  |   |   |
| <b>Mandatory Subsequence E1 Receiving agent (KDD member)</b>          |                      |      |  |   |   |
| M   | :16R:                |      | Start of Block   | <b>SETPRTY</b>  | <b>SETPRTY</b>  |
| M   | :95P:<br>or<br>:95R: |      | Receiving agent's BIC                                  | <b>REAG//4!a2!a2!c[3!c]</b><br>or<br><b>REAG/KDDS/34x</b> | <b>REAG//RRESI22</b>                                  |
| M   | :16S:                |      | End of Block   | <b>SETPRTY</b>  | <b>SETPRTY</b>  |
| <b>End of Subsequence E1 Receiving agent</b>                          |                      |      |  |   |   |
| <b>Mandatory Subsequence E1 Place of Settlement</b>                   |                      |      |  |   |   |
| M   | :16R:                |      | Start of Block   | <b>SETPRTY</b>  | <b>SETPRTY</b>  |
| M   | :95P:                |      | KDD's BIC  | <b>PSET//4!a2!a2!c[3!c]</b>                               | <b>PSET//KDDSSI22</b>                                 |
| M   | :16S:                |      | End of Block   | <b>SETPRTY</b>  | <b>SETPRTY</b>  |
| <b>End of Subsequence E1 Place of Settlement</b>                      |                      |      |  |   |   |
| <b>Optional Subsequence E2 Cash party (applicable only in MT543!)</b> |                      |      |  |   |   |
| M   | :16R:                |      | Start of Block   | <b>CSHPRTY</b>  | <b>CSHPRTY</b>  |
| M   | :95P:                |      | Account with Institution                               | <b>ACCW//4!a2!a2!c[3!c]</b>                               | <b>ACCW//BBAASI22</b>                                 |
| M   | :16S:                |      | End of Block   | <b>CSHPRTY</b>  | <b>CSHPRTY</b>  |
| <b>End of Subsequence E2 Cash party</b>                               |                      |      |  |   |   |
| <b>Optional Subsequence E2 Cash party (applicable only in MT543!)</b> |                      |      |  |   |   |
| M   | :16R:                |      | Start of Block   | <b>CSHPRTY</b>  | <b>CSHPRTY</b>  |
| M   | :95Q:                |      | Beneficiary of Money                                   | <b>BENM//4*35x</b>  | <b>BENM//Acc owner's name</b><br>Acc. owner's Address |
| M   | :97E:                |      | IBAN   | <b>CASH//35x</b>  | <b>CASH//SI56123412341234123</b>                      |
| M   | :16S:                |      | End of Block   | <b>CSHPRTY</b>  | <b>CSHPRTY</b>  |
| <b>End of Subsequence E2 Cash party</b>                               |                      |      |  |   |   |
| <b>Mandatory Subsequence E3 Amount (applicable only in MT543!)</b>    |                      |      |  |   |   |
| M   | :16R:                |      | Start of Block   | <b>AMT</b>  | <b>AMT</b>  |
| M   | :19A:                |      | Amount   | <b>SETT//3!a15d</b>                                       | <b>SETT//EUR100,</b>                                  |
| M   | :16S:                |      | End of Block   | <b>AMT</b>  | <b>AMT</b>  |
| <b>End of Subsequence E3 Amount</b>                                   |                      |      |  |   |   |
| M   | :16S:                |      | End of Block   | <b>SETDET</b>   | <b>SETDET</b>   |
| <b>End of Sequence E Settlement details</b>                           |                      |      |  |   |   |

### 5.3 MT548 Settlement Status and Processing Advice

| Status  | Tag   | Qualifier | Description   | Content/Options     | Example                       |
|---|-------|-----------|---|---------------------|-------------------------------|
| <b>Mandatory Sequence A General Information</b> |       |           |   |                     |                               |
| M   | :16R: |           | Start of Block  | <b>GENL</b>         | <b>GENL</b>                   |
| M   | :20C: | SEME      | Sender's reference  | <b>SEME//16x</b>    | <b>SEME//000002AAA0106123</b> |
| M   | :23G: |           | Function of the message – response to instruction or cancellation | <b>INST or CAST</b> | <b>INST or CAST</b>           |
| <b>Subsequence A1 – Linkages – Mandatory</b>    |       |           |   |                     |                               |
| M   | :16R: |           | Start of Block  | <b>LINK</b>         | <b>LINK</b>                   |
| M   | :20C: | RELA      | Reference – TAG :20C: of MT54x                                    | <b>RELA//16x</b>    | <b>RELA//000002AAA0106123</b> |
| M   | :16S: |           | End of Block  | <b>LINK</b>         | <b>LINK</b>                   |
| <b>End of subsequence A1</b>                    |       |           |   |                     |                               |
| <b>Subsequence A2 – Status – Mandatory</b>      |       |           |   |                     |                               |
| M   | :16R: |           | Start of Block  | <b>STAT</b>         | <b>STAT</b>                   |
| M   | :25D: |           | Status  | <b>4!c//4!c</b>     | <b>SETT//PEND</b>             |
| <b>Subsequence A2a – Reason – Optional</b>      |       |           |   |                     |                               |
| M   | :16R: |           | Start of Block  | <b>REAS</b>         | <b>REAS</b>                   |
| M   | :24B: |           | Reason  | <b>4!c//4!c</b>     | <b>PEND//MONY</b>             |
| O   | :70D: |           | Reason Narrative<br><b>(mandatory in reply to MT541)</b>          | <b>REAS//6*35x</b>  | <b>REAS//01234-12345</b>      |
| M   | :16S: |           | End of Block  | <b>REAS</b>         | <b>REAS</b>                   |
| <b>End of subsequence A2a</b>                   |       |           |   |                     |                               |
| M   | :16S: |           | End of Block  | <b>STAT</b>         | <b>STAT</b>                   |
| <b>End of subsequence A2</b>                    |       |           |   |                     |                               |
| M   | :16S: |           | End of Block  | <b>GENL</b>         | <b>GENL</b>                   |
| <b>End of sequence A General Information</b>    |       |           |   |                     |                               |

#### 5.4 MT544 RECEIVE FREE CONFIRMATION / MT545 Receive AGAINST Payment Confirmation

| Status  | Tag   | Qualifier | Description                             | Content/Options   | Example                       |
|---|-------|-----------|---|-------------------|-------------------------------|
| <b>Mandatory Sequence A General Information</b> |       |           |   |                   |                               |
| M   | :16R: |           | Start of Block                          | <b>GENL</b>       | <b>GENL</b>                   |
| M   | :20C: | SEME      | Sender's reference                      | <b>SEME//16x</b>  | <b>SEME//000002AAA0106124</b> |
| M   | :23G: |           | Function of the message                 | <b>NEWM</b>       | <b>NEWM</b>                   |
| <b>Subsequence A1 – Linkages – Mandatory</b>    |       |           |   |                   |                               |
| M   | :16R: |           | Start of Block                          | <b>LINK</b>       | <b>LINK</b>                   |
| M   | :20C: | RELA      | Reference – TAG :20C: of MT540 or MT541 | <b>RELA//16x</b>  | <b>RELA//000002AAA0106123</b> |
| M   | :16S: |           | End of Block                            | <b>LINK</b>       | <b>LINK</b>                   |
| <b>End of subsequence A1</b>                    |       |           |   |                   |                               |
| M   | :16S: |           | End of Block                            | <b>GENL</b>       | <b>GENL</b>                   |
| <b>End of sequence A General Information</b>    |       |           |   |                   |                               |
| <b>Mandatory Sequence B Trade Details</b>       |       |           |   |                   |                               |
| M   | :16R: |           | Start of Block                          | <b>TRADDET</b>    | <b>TRADDET</b>                |
| M   | :98A: | ESET      | Effective settlement date               | <b>ESET//8!n</b>  | <b>ESET//20061104</b>         |
| M   | :98A: | TRAD      | Trade date                              | <b>TRAD//8!n</b>  | <b>TRAD//20061102</b>         |
| M   | :35B: |           | Identification of Financial             | <b>ISIN!e12!c</b> | <b>ISIN SI1234567891</b>      |

|   |       |      |  |  |   |
|---|-------|------|--|--|---|
|   |       |      | Instrument                               |  |   |
| M   | :16S: |      | End of Block                             | <b>TRADDET</b>                                       | <b>TRADDET</b>                                    |
| <b>End of sequence B Trade Details</b>                            |       |      |  |  |   |
| <b>Mandatory Sequence C Financial Instrument/Account</b>          |       |      |  |  |   |
| M   | :16R: |      | Start of Block                           | <b>FIAC</b>  | <b>FIAC</b>                                       |
| M   | :36B: | ESTT | Quantity of Financial Instrument settled | <b>ESTT//UNIT/15d</b><br>or<br><b>ESTT//FAMT/15d</b> | <b>ESTT//UNIT/123,</b>                            |
| M   | :97A: | SAFE | Safekeeping Account credited or debited  | <b>SAFE//35x</b>                                     | <b>SAFE//1111</b>                                 |
| M   | :16S: |      | End of Block                             | <b>FIAC</b>  | <b>FIAC</b>                                       |
| <b>End of Sequence C Financial Instrument/Account</b>             |       |      |  |  |   |
| <b>Mandatory Sequence E Settlement details</b>                    |       |      |  |  |   |
| M   | :16R: |      | Start of Block                           | <b>SETDET</b>  | <b>SETDET</b>                                     |
| M   | :22F: |      | Trade indicator                          | <b>SETR//TRAD</b>                                    | <b>SETR//TRAD</b>                                 |
| <b>Mandatory Subsequence E1 Seller</b>                            |       |      |  |  |   |
| M   | :16R: |      | Start of Block                           | <b>SETPRTY</b>                                       | <b>SETPRTY</b>                                    |
| M   | :95Q: |      | Seller Name and address                  | <b>SELL//4*35x</b>                                   | <b>SELL//Seller Name</b><br><b>Seller Address</b> |
| M   | :97A: | SAFE | Safekeeping Account                      | <b>SAFE//35x</b>                                     | <b>SAFE//3333</b>                                 |
| M   | :16S: |      | End of Block                             | <b>SETPRTY</b>                                       | <b>SETPRTY</b>                                    |
| <b>End of Subsequence E1 Seller</b>                               |       |      |  |  |   |
| <b>Mandatory Subsequence E1 Delivering agent (KDD member)</b>     |       |      |  |  |   |
| M   | :16R: |      | Start of Block                           | <b>SETPRTY</b>                                       | <b>SETPRTY</b>                                    |
| M   | :95P: |      | Delivering agent's BIC                   | <b>DEAG//4!a2!a2!c[3!c]</b>                          | <b>DEAG//GGHHSI22</b>                             |
| M   | :16S: |      | End of Block                             | <b>SETPRTY</b>                                       | <b>SETPRTY</b>                                    |
| <b>End of Subsequence E1 Delivering agent</b>                     |       |      |  |  |   |
| <b>Mandatory Subsequence E1 Place of Settlement</b>               |       |      |  |  |   |
| M   | :16R: |      | Start of Block                           | <b>SETPRTY</b>                                       | <b>SETPRTY</b>                                    |
| M   | :95P: |      | KDD's BIC                                | <b>PSET//4!a2!a2!c[3!c]</b>                          | <b>PSET//KDDSSI22</b>                             |
| M   | :16S: |      | End of Block                             | <b>SETPRTY</b>                                       | <b>SETPRTY</b>                                    |
| <b>End of Subsequence E1 Place of Settlement</b>                  |       |      |  |  |   |
| <b>Mandatory Subsequence E3 Amount (applicable only in MT545)</b> |       |      |  |  |   |
| M   | :16R: |      | Start of Block                           | <b>AMT</b>   | <b>AMT</b>  |
| M   | :19A: |      | Amount                                   | <b>SETT//3!a15d</b>                                  | <b>SETT//EUR100,</b>                              |
| M   | :16S: |      | End of Block                             | <b>AMT</b>   | <b>AMT</b>  |
| <b>End of Subsequence E3 Amount</b>                               |       |      |  |  |   |
| M   | :16S: |      | End of Block                             | <b>SETDET</b>  | <b>SETDET</b>                                     |
| <b>End of Sequence E Settlement details</b>                       |       |      |  |  |   |

### 5.5 MT546 DELIVER FREE CONFIRMATION / MT547 Deliver Against Payment Confirmation

| Status  | Tag   | Qualifier | Description              | Content/Options  | Example                       |
|---|-------|-----------|--------------------------|------------------|-------------------------------|
| <b>Mandatory Sequence A General Information</b> |       |           |                          |                  |                               |
| M   | :16R: |           | Start of Block           | <b>GENL</b>      | <b>GENL</b>                   |
| M   | :20C: | SEME      | Sender's reference       | <b>SEME//16x</b> | <b>SEME//000002AAA0106124</b> |
| M   | :23G: |           | Function of the message  | <b>NEWM</b>      | <b>NEWM</b>                   |
| <b>Subsequence A1 – Linkages – Mandatory</b>    |       |           |                          |                  |                               |
| M   | :16R: |           | Start of Block           | <b>LINK</b>      | <b>LINK</b>                   |
| M   | :20C: | RELA      | Reference – TAG :20C: of | <b>RELA//16x</b> | <b>RELA//000002AAA0106123</b> |

|  |       |      |  |  |   |
|--|-------|------|--|--|---|
|  |       |      | MT542 or MT543                           |  |   |
| M  | :16S: |      | End of Block                             | <b>LINK</b>  | <b>LINK</b>   |
| <b>End of subsequence A1</b>                                       |       |      |  |  |   |
| M  | :16S: |      | End of Block                             | <b>GENL</b>  | <b>GENL</b>   |
| <b>End of sequence A General Information</b>                       |       |      |  |  |   |
| <b>Mandatory Sequence B Trade Details</b>                          |       |      |  |  |   |
| M  | :16R: |      | Start of Block                           | <b>TRADEDET</b>                                      | <b>TRADEDET</b>                                       |
| M  | :98A: | ESET | Effective settlement date                | <b>ESET//8!n</b>                                     | <b>ESET//20061104</b>                                 |
| M  | :98A: | TRAD | Trade date                               | <b>TRAD//8!n</b>                                     | <b>TRAD//20061102</b>                                 |
| M  | :35B: |      | Identification of Financial Instrument   | <b>ISIN1!e12!c</b>                                   | <b>ISIN SI1234567891</b>                              |
| M  | :16S: |      | End of Block                             | <b>TRADEDET</b>                                      | <b>TRADEDET</b>                                       |
| <b>End of sequence B Trade Details</b>                             |       |      |  |  |   |
| <b>Mandatory Sequence C Financial Instrument/Account</b>           |       |      |  |  |   |
| M  | :16R: |      | Start of Block                           | <b>FIAC</b>  | <b>FIAC</b>   |
| M  | :36B: | ESTT | Quantity of Financial Instrument settled | <b>ESTT//UNIT/15d</b><br>or<br><b>ESTT//FAMT/15d</b> | <b>ESTT//UNIT/123,</b>                                |
| M  | :97A: | SAFE | Safekeeping Account credited or debited  | <b>SAFE//35x</b>                                     | <b>SAFE//1111</b>                                     |
| M  | :16S: |      | End of Block                             | <b>FIAC</b>  | <b>FIAC</b>   |
| <b>End of Sequence C Financial Instrument/Account</b>              |       |      |  |  |   |
| <b>Mandatory Sequence E Settlement details</b>                     |       |      |  |  |   |
| M  | :16R: |      | Start of Block                           | <b>SETDET</b>  | <b>SETDET</b>   |
| M  | :22F: |      | Trade indicator                          | <b>SETR//TRAD</b>                                    | <b>SETR//TRAD</b>                                     |
| <b>Mandatory Subsequence E1 Buyer</b>                              |       |      |  |  |   |
| M  | :16R: |      | Start of Block                           | <b>SETPRTY</b>                                       | <b>SETPRTY</b>  |
| M  | :95Q: |      | Buyer Name and address                   | <b>BUYR//4*35x</b>                                   | <b>BUYR//Buyer Name</b><br><b>BUYR//Buyer Address</b> |
| M  | :97A: | SAFE | Safekeeping Account                      | <b>SAFE//35x</b>                                     | <b>SAFE//2222</b>                                     |
| M  | :16S: |      | End of Block                             | <b>SETPRTY</b>                                       | <b>SETPRTY</b>  |
| <b>End of Subsequence E1 Buyer</b>                                 |       |      |  |  |   |
| <b>Mandatory Subsequence E1 Receiving agent (KDD member)</b>       |       |      |  |  |   |
| M  | :16R: |      | Start of Block                           | <b>SETPRTY</b>                                       | <b>SETPRTY</b>  |
| M  | :95P: |      | Receiving agent's BIC                    | <b>REAG//4!a2!a2!c[3!c]</b>                          | <b>REAG//CCDDSI22</b>                                 |
| M  | :16S: |      | End of Block                             | <b>SETPRTY</b>                                       | <b>SETPRTY</b>  |
| <b>End of Subsequence E1 Receiving agent</b>                       |       |      |  |  |   |
| <b>Mandatory Subsequence E1 Place of Settlement</b>                |       |      |  |  |   |
| M  | :16R: |      | Start of Block                           | <b>SETPRTY</b>                                       | <b>SETPRTY</b>  |
| M  | :95P: |      | KDD's BIC                                | <b>PSET//4!a2!a2!c[3!c]</b>                          | <b>PSET//KDDSSI22</b>                                 |
| M  | :16S: |      | End of Block                             | <b>SETPRTY</b>                                       | <b>SETPRTY</b>  |
| <b>End of Subsequence E1 Place of Settlement</b>                   |       |      |  |  |   |
| <b>Mandatory Subsequence E3 Amount (applicable only in MT547!)</b> |       |      |  |  |   |
| M  | :16R: |      | Start of Block                           | <b>AMT</b>   | <b>AMT</b>  |
| M  | :19A: |      | Settled Amount                           | <b>ESTT//3!a15d</b>                                  | <b>ESTT//EUR100,</b>                                  |
| M  | :16S: |      | End of Block                             | <b>AMT</b>   | <b>AMT</b>  |
| <b>End of Subsequence E3 Amount</b>                                |       |      |  |  |   |
| M  | :16S: |      | End of Block                             | <b>SETDET</b>  | <b>SETDET</b>   |
| <b>End of Sequence E Settlement details</b>                        |       |      |  |  |   |

## 5.6 MT540-MT543 Message Fields

| Tag | Field Name<br>Description | Format | Mandatory/Optional |
|-----|---------------------------|--------|--------------------|
|-----|---------------------------|--------|--------------------|

### 5.6.1 SEQUENCE A General Information

|            |  |           |           |
|------------|--|-----------|-----------|
| <b>20C</b> | Sender's Message Reference   | :4!c//16x | Mandatory |
|            | CRVP supports the following qualifier value:<br><b>SEME</b> - Sender's Message Reference |           |           |

|            |   |            |           |
|------------|---|------------|-----------|
| <b>23G</b> | Function of the Message   | :4!c[/4!c] | Mandatory |
|            | CRVP supports the following codes:<br><b>NEWM</b> – New message<br><b>CANC</b> – Message requesting cancellation of previously sent message<br>---<br><b>PREA</b> is not supported by CRVP and will be ignored. |            |           |

### 5.6.2 SUBSEQUENCE A1 Linkages

This subsequence is mandatory in cancellations and applicable only for cancellations.

|            |   |           |           |
|------------|---|-----------|-----------|
| <b>20C</b> | Reference   | :4!c//16x | Mandatory |
|            | CRVP supports the following codes:<br><b>PREV</b> – Message reference of the linked message to be cancelled<br>---<br>Other codes (e.g. <b>PREA</b> ) will be ignored; however, the message will be processed normally. |           |           |

### 5.6.3 SEQUENCE B Trade Details

|            |   |           |           |
|------------|---|-----------|-----------|
| <b>98A</b> | Date/Time   | :4!c//8!n | Mandatory |
|            | Two fields with the following codes are required by CRVP:<br><b>SETT</b> - Settlement Date<br><b>TRAD</b> – Trade Date<br>---<br>Instructions with invalid settlement or trade date will be rejected with Status/Reason <b>REJT/DDAT</b> or <b>REJT/DTRD</b> respectively |           |           |

|            |   |             |           |
|------------|---|-------------|-----------|
| <b>35B</b> | Identification of the Financial Instrument  | ISIN1!e12!c | Mandatory |
|            | ISIN number of the financial instrument<br>Unrecognized financial instrument will be rejected with Status/Reason <b>REJT/DSEC</b> |             |           |

|            |   |                     |          |
|------------|---|---------------------|----------|
| <b>70E</b> | Settlement Instruction Processing Narrative   | :SPRO//5a!/5n[/15n] | Optional |
|            | This field is only applicable in FOP settlement instructions. Using this field, instructing party provides additional information when settling blocked financial instruments. CRVP supports only <b>SPRO</b> as the qualifier. |                     |          |

|  |   |
|--|---|
|  | <p>The following sub-fields are available (separated by '/'): </p> <p>Subfield 1: (5a!): Operation type (CRVP proprietary codes):</p> <ul style="list-style-type: none"> <li>• <b>EXEPL</b> – Execute Pledge</li> <li>• <b>EXERD</b> – Execute Redemption right</li> <li>• <b>EXEPR</b> – Execute Preemptive right</li> <li>• <b>TRBLK</b> – Transfer blocked financial instruments</li> </ul> <p>Subfield 2: (5n) – subaccount number</p> <p>Subfield 3: (15n) – order number (not applicable in TRBLK)</p> <p>---</p> <p>Unrecognized or invalid instructions will be rejected with Status/Reason <b>REJT/NARR</b> and narrative describing rejection reason.</p> |
|--|---|

### 5.6.4 SEQUENCE C Financial Instrument/Account

|            |  |                |           |
|------------|--|----------------|-----------|
| <b>36B</b> | Quantity of Financial Instrument to be Settled   | :SETT//4!c/15d | Mandatory |
|            | <p>CRVP supports the following Quantity type code:</p> <p><b>UNIT</b> - Quantity expressed as a number, for example, a number of shares. This must be a positive integer. Mandatory for Equities. (CFI Category E) (CFI &amp; ISO 10962)</p> <p><b>FAMT</b> – Quantity expressed as an amount representing the face amount. Mandatory for debt instruments. (CFI Category D) (CFI &amp; ISO 10962)</p> <p>---</p> <p><b>AMOR</b> is not supported by CRVP.</p> <p>Invalid quantity type codes will be rejected with Status/Reason <b>REJT/DQUA</b></p> |                |           |
| <b>97A</b> | Safekeeping account  | :SAFE//35x     | Mandatory |
|            | <p>Safekeeping Account to be credited or debited. The instructing party must be the account operator (KDD Member) or authorized member in case of Execute Pledge instruction.</p> <p>---</p> <p>Unrecognized or invalid account will be rejected with Status/Reason <b>REJT/SAFE</b></p>   |                |           |

### 5.6.5 SEQUENCE E Settlement details

|            |  |            |           |
|------------|--|------------|-----------|
| <b>22F</b> | Type of Settlement Transaction   | :SETR//4!c | Mandatory |
|            | <p>CRVP supports the following indicator value:</p> <p><b>TRAD</b> - Relates to the settlement of a trade</p> <p><b>REAL</b> - Relates to a realignment of positions</p> <p>---</p> <p>Other values will be rejected with Status/Reason <b>REJT/SETR</b></p> |            |           |

### 5.6.6 SUBSEQUENCE E1 Buyer

This subsequence is mandatory in MT542 and MT543.

|            |  |  |           |
|------------|--|--|-----------|
| <b>95a</b> | Buyer  | Option P: :BUYR//4!a2!a2!c[3!c]<br>Option Q: :BUYR//4*35 | Mandatory |
|            | Buyer BIC or Name and address.<br>This field is unprocessed (ignored) by CRVP. |  |           |

|            |   |           |           |
|------------|---|-----------|-----------|
| <b>97A</b> | Safekeeping Account   | SAFE//35x | Mandatory |
|            | Safekeeping account at the CRVP to be credited. This field is identifying the buyer.<br>---<br>Unrecognized or invalid account will be rejected with Status/Reason <b>REJT/IEXE</b> . |           |           |

### 5.6.7 SUBSEQUENCE E1 Receiving agent

This subsequence is mandatory in MT542 and MT543.

|            |   |   |           |
|------------|---|---|-----------|
| <b>95a</b> | Receiving Agent   | Option P: REAG//4!a2!a2!c[3!c]<br>Option R: REAG/KDDS/34x | Mandatory |
|            | Receiving Agent identification. Option P (BIC) is preferred.<br>In case there is no BIC available KDD Member Code must be specified following <b>KDDS</b> specified as Data Source Scheme. The list of possible Member Codes is available on KDD's web page ( <a href="http://www.kdd.si">www.kdd.si</a> ). The Receiving Agent must be account operator for the safekeeping account specified in subsequence E1 Buyer.<br>---<br>Unrecognized receiving agent will be rejected with Status/Reason <b>REJT/ICAG</b> |   |           |

### 5.6.8 SUBSEQUENCE E1 Seller

This subsequence is mandatory in MT540 and MT541.

|            |   |  |           |
|------------|---|--|-----------|
| <b>95a</b> | Seller  | Option P: :SELL//4!a2!a2!c[3!c]<br>Option Q: :SELL//4*35 | Mandatory |
|            | Seller BIC or Name and address.<br>This field is unprocessed (ignored) by CRVP. |  |           |

|            |   |           |           |
|------------|---|-----------|-----------|
| <b>97A</b> | Safekeeping Account   | SAFE//35x | Mandatory |
|            | Safekeeping account at the CRVP to be debited.<br>---<br>Unrecognized or invalid account will be rejected with Status/Reason <b>REJT/IEXE</b> . |           |           |

### 5.6.9 SUBSEQUENCE E1 Delivering agent

This subsequence is mandatory in MT540 and MT541.

|            |  |   |           |
|------------|--|---|-----------|
| <b>95a</b> | Delivering Agent   | Option P: :DEAG//4!a2!a2!c[3!c]<br>Option R: :DEAG/KDDS/34x | Mandatory |
|            | Delivering Agent identification. Option P (BIC) is preferred.<br>In case there is no BIC available KDD Member Code must be specified following <b>KDDS</b> specified as Data Source Scheme. The list of possible Member Codes is available on KDD's web page ( <a href="http://www.kdd.si">www.kdd.si</a> ). The Delivering Agent must be account operator or authorized member in case of Execute Pledge instruction for the safekeeping account specified in subsequence E1 Seller.<br>--- |   |           |



|  |  |
|--|--|
|  | Unrecognized delivering agent will be rejected with Status/Reason <b>REJT/ICAG</b> |
|--|--|

### 5.6.10 SUBSEQUENCE E1 Place of settlement

|            |   |                  |           |
|------------|---|------------------|-----------|
| <b>95P</b> | Place of settlement   | :PSETT//KDDSSI22 | Mandatory |
|            | Place of settlement identification. KDDSSI22 must be specified.<br>---<br>Other values will be rejected with Status/Reason <b>REJT/DEPT</b> |                  |           |

### 5.6.11 SUBSEQUENCE E2 Cash Party

This subsequence is applicable only in MT543. It is optional, provided there is prior arrangement in CRVP regarding the cash account to be credited during settlement.

This cash account is linked with securities account in CRVP.

If there is no such arrangement this and the following subsequence are mandatory in MT543.

In case there is no prior arrangement and this or the following subsequence is missing, the instruction will be rejected with Status/Reason **REJT/CASH**.

The information provided in this and the following subsequence will take priority over prior arrangement.

|            |   |                       |           |
|------------|---|-----------------------|-----------|
| <b>95P</b> | Account with Institution  | :ACCW//4!a2!a2!c[3!c] | Mandatory |
|            | BIC code identifying financial institution that services the cash account of the beneficiary customer. The institution must be a TARGET2 participant using this BIC code. |                       |           |

### 5.6.12 SUBSEQUENCE E2 Cash Party

This subsequence is applicable only in MT543. It is optional, provided there is prior arrangement in CRVP regarding the cash account to be credited during settlement.

This cash account is linked with securities account in CRVP.

If there is no such arrangement this and the preceding subsequence are mandatory in MT543.

In case there is no prior arrangement and this or the preceding subsequence is missing, the instruction will be rejected with Status/Reason **REJT/CASH**.

The information provided in this and the preceding subsequence will take priority over prior arrangement.

|            |  |              |           |
|------------|--|--------------|-----------|
| <b>95Q</b> | Beneficiary of Money                         | :BENM//4*35x | Mandatory |
|            | Ultimate party to be credited with the money |              |           |

|            |  |            |           |
|------------|--|------------|-----------|
| <b>97E</b> | Account  | :CASH//35x | Mandatory |
|            | Account in which cash is maintained. Must be specified using IBAN. |            |           |

### 5.6.13 SUBSEQUENCE E3 Amount

This subsequence is mandatory in MT541 and MT543 and applicable only in MT541 and MT543.

|            |   |               |           |
|------------|---|---------------|-----------|
| <b>19A</b> | Amount  | :SETT//3!a15d | Mandatory |
|            | Total amount of money to be paid or received in exchange for the financial instrument. The amount must be |               |           |

|  |   |
|--|---|
|  | specified in EUR.<br>---<br>Unrecognized or invalid values will be rejected with Status/Reason <b>REJT/DMON</b><br>Currency other than EUR will be rejected with Status/Reason <b>REJT/NCRR</b> |
|--|---|

## 6 Sample scenarios

### 6.1 Scenario 1

This scenario provides an example of messages exchanged for successful FOP settlement.

|                                     |              |
|-------------------------------------|--------------|
| Receiving agent                     | RERESI22     |
| Delivering agent                    | DEDESI22     |
| CSD and place of settlement         | KDDSSI22     |
| Buyer (client of receiving agent)   | John Doe     |
| Seller (client of delivering agent) | Adam Smith   |
| Financial instrument ISIN           | SI1234567890 |
| Quantity settled                    | 123          |
| Buyer's account open with REAG      | 1234565      |
| Seller's account open with DEAG     | 7777770      |



1. **MT540** sent by receiving agent (RERESI22) to CSD (KDDSSI22)

**Sequence A – General Information**

|                       |  |
|-----------------------|--|
| :16R:GENL             |  |
| :20C::SEME//123456789 |  |
| :23G:NEWM             |  |
| :16S:GENL             |  |

**Sequence B – Trade details**

|                        |  |
|------------------------|--|
| :16R:TRADEDET          |  |
| :98A::SETT//20100903   | Settlement date                            |
| :98A::TRAD//20100901   | Trade date                                 |
| :35B:ISIN SI1234567890 | Identification of the financial instrument |
| :16S:TRADEDET          |  |

**Sequence C – Financial Instrument/Account**

|                       |  |
|-----------------------|--|
| :16R:FIAC             |  |
| :36B::SETT//UNIT/123, | Quantity of Financial Instrument to be settled |
| :97A::SAFE//1234565   | Safekeeping account to be credited             |
| :16S:FIAC             |  |

**Sequence E – Settlement details**

|                        |  |
|------------------------|--|
| :16R:SETDET            |  |
| :22F::SETR//TRAD       |  |
| :16R:SETPRTY           |  |
| :95P::DEAG//DEDESI22   | Delivering agent BIC                                   |
| :16S:SETPRTY           |  |
| :16R:SETPRTY           |  |
| :95Q::SELL//ADAM SMITH | Seller   |
| :97A::SAFE//7777770    | Seller's account at the delivering agent to be debited |
| :16S:SETPRTY           |  |
| :16R:SETPRTY           |  |
| :95P::PSET//KDDSSI22   | Place of settlement                                    |
| :16S:SETPRTY           |  |
| :16S:SETDET            |  |



2. **MT542** sent by delivering agent (DEDESI22) to CSD (KDDSSI22)

**Sequence A – General Information**

|                    |  |
|--------------------|--|
| :16R:GENL          |  |
| :20C::SEME//ABCDEF |  |
| :23G:NEWM          |  |
| :16S:GENL          |  |

**Sequence B – Trade details**

|                         |  |
|-------------------------|--|
| :16R:TRADEDET           |  |
| :98A::SETT//20100903    | Settlement date                            |
| :98A::TRAD//20100901    | Trade date                                 |
| :35B::ISIN SI1234567890 | Identification of the financial instrument |
| :16S:TRADEDET           |  |

**Sequence C – Financial Instrument/Account**

|                       |  |
|-----------------------|--|
| :16R:FIAC             |  |
| :36B::SETT//UNIT/123, | Quantity of Financial Instrument to be settled |
| :97A::SAFE//7777770   | Safekeeping account to be debited              |
| :16S:FIAC             |  |

**Sequence E – Settlement details**

|                      |   |
|----------------------|---|
| :16R:SETDET          |   |
| :22F::SETR//TRAD     |   |
| :16R:SETPRTY         |   |
| :95P::REAG//RERESI22 | Receiving agent BIC                                   |
| :16S:SETPRTY         |   |
| :16R:SETPRTY         |   |
| :95Q::BUYR//JOHN DOE | Buyer   |
| :97A::SAFE//1234565  | Buyer's account at the receiving agent to be credited |
| :16S:SETPRTY         |   |
| :16R:SETPRTY         |   |
| :95P::PSET//KDDSSI22 | Place of settlement                                   |
| :16S:SETPRTY         |   |
| :16S:SETDET          |   |



3. **MT544** sent from CSD (KDDSSI22) to receiving agent (RRESI22) after successful settlement

**Sequence A – General Information**

|                       |  |
|-----------------------|--|
| :16R:GENL             |  |
| :20C::SEME//00123     |  |
| :23G:NEWM             |  |
| :16R:LINK             |  |
| :20C::RELA//123456789 |  |
| :16S:LINK             |  |
| :16S:GENL             |  |

**Sequence B – Trade details**

|                         |  |
|-------------------------|--|
| :16R:TRADEDET           |  |
| :98A::ESET//20100903    | Effective settlement date                  |
| :98A::TRAD//20100901    | Trade date                                 |
| :35B::ISIN SI1234567890 | Identification of the financial instrument |
| :16S:TRADEDET           |  |

**Sequence C – Financial instrument/Account**

|                       |  |
|-----------------------|--|
| :16R:FIAC             |  |
| :36B::ESTT//UNIT/123, | Quantity of Financial Instrument settled |
| :97A::SAFE//1234565   | Safekeeping account credited             |
| :16S:FIAC             |  |

**Sequence E – Settlement details**

|                        |  |
|------------------------|--|
| :16R:SETDET            |  |
| :22F::SETR//TRAD       |  |
| :16R:SETPRTY           |  |
| :95P::DEAG//DEDESI22   | Delivering agent BIC                             |
| :16S:SETPRTY           |  |
| :16R:SETPRTY           |  |
| :95Q::SELL//ADAM SMITH | Seller   |
| :97A::SAFE//7777770    | Seller's account at the delivering agent debited |
| :16S:SETPRTY           |  |
| :16R:SETPRTY           |  |
| :95P::PSET//KDDSSI22   | Place of settlement                              |
| :16S:SETPRTY           |  |
| :16S:SETDET            |  |



4. **MT546** sent from CSD (KDDSSI22) to delivering agent (DEDESI22) after successful settlement

**Sequence A – General Information**

|                    |  |
|--------------------|--|
| :16R:GENL          |  |
| :20C::SEME//00124  |  |
| :23G:NEWM          |  |
| :16R:LINK          |  |
| :20C::RELA//ABCDEF |  |
| :16S:LINK          |  |
| :16S:GENL          |  |

**Sequence B – Trade details**

|                        |  |
|------------------------|--|
| :16R:TRADEDET          |  |
| :98A::ESET//20100903   | Effective settlement date                  |
| :98A::TRAD//20100901   | Trade date                                 |
| :35B:ISIN SI1234567890 | Identification of the financial instrument |
| :16S:TRADEDET          |  |

**Sequence C – Financial instrument/Account**

|                       |  |
|-----------------------|--|
| :16R:FIAC             |  |
| :36B::ESTT//UNIT/123, | Quantity of Financial Instrument settled |
| :97A::SAFE//7777770   | Safekeeping account debited              |
| :16S:FIAC             |  |

**Sequence E – Settlement details**

|                      |   |
|----------------------|---|
| :16R:SETDET          |   |
| :22F::SETR//TRAD     |   |
| :16R:SETPRTY         |   |
| :95P::REAG//RERESI22 | Receiving agent BIC                             |
| :16S:SETPRTY         |   |
| :16R:SETPRTY         |   |
| :95Q::BUYR//JOHN DOE | Buyer   |
| :97A::SAFE//1234565  | Buyer's account at the receiving agent credited |
| :16S:SETPRTY         |   |
| :16R:SETPRTY         |   |
| :95P::PSET//KDDSSI22 | Place of settlement                             |
| :16S:SETPRTY         |   |
| :16S:SETDET          |   |

**6.2 Scenario 2**

This scenario provides an example of messages exchanged for successful DVP settlement.

|                                     |              |
|-------------------------------------|--------------|
| Receiving agent                     | RERESI22     |
| Delivering agent                    | DEDESI22     |
| CSD and place of settlement         | KDDSSI22     |
| Buyer (client of receiving agent)   | John Doe     |
| Seller (client of delivering agent) | Adam Smith   |
| Financial instrument ISIN           | SI1234567890 |



|                                 |                     |
|---------------------------------|---------------------|
| Quantity settled                | 123                 |
| Payment amount                  | 100 EUR             |
| Buyer's account open with REAG  | 1234565             |
| Seller's account open with DEAG | 7777770             |
| Buyer's bank                    | CCCCSI22            |
| Seller's bank                   | DDDDSI22            |
| Seller's bank account number    | SI56123412341234123 |



1. **MT541** sent by receiving agent (RERESI22) to CSD (KDDSSI22)

**Sequence A – General Information**

|                       |  |
|-----------------------|--|
| :16R:GENL             |  |
| :20C::SEME//123456789 |  |
| :23G:NEWM             |  |
| :16S:GENL             |  |

**Sequence B – Trade details**

|                         |  |
|-------------------------|--|
| :16R:TRADEDET           |  |
| :98A::SETT//20100903    | Settlement date                            |
| :98A::TRAD//20100901    | Trade date                                 |
| :35B::ISIN SI1234567890 | Identification of the financial instrument |
| :16S:TRADEDET           |  |

**Sequence C – Financial Instrument/Account**

|                       |  |
|-----------------------|--|
| :16R:FIAC             |  |
| :36B::SETT//UNIT/123, | Quantity of Financial Instrument to be settled |
| :97A::SAFE//1234565   | Safekeeping account to be credited             |
| :16S:FIAC             |  |

**Sequence E – Settlement details**

|                        |  |
|------------------------|--|
| :16R:SETDET            |  |
| :22F::SETR//TRAD       |  |
| :16R:SETPRTY           |  |
| :95P::DEAG//DEDESI22   | Delivering agent BIC                                   |
| :16S:SETPRTY           |  |
| :16R:SETPRTY           |  |
| :95Q::SELL//ADAM SMITH | Seller   |
| :97A::SAFE//7777770    | Seller's account at the delivering agent to be debited |
| :16S:SETPRTY           |  |
| :16R:SETPRTY           |  |
| :95P::PSET//KDDSSI22   | Place of settlement                                    |
| :16S:SETPRTY           |  |
| :16R:AMT               |  |
| :19A::SETT//EUR 100,   | Amount and currency                                    |
| :16S:AMT               |  |
| :16S:SETDET            |  |





2. **MT543** sent by delivering agent (DEDESI22) to CSD (KDDSSI22)

**Sequence A – General Information**

|                    |  |
|--------------------|--|
| :16R:GENL          |  |
| :20C::SEME//ABCDEF |  |
| :23G:NEWM          |  |
| :16S:GENL          |  |

**Sequence B – Trade details**

|                        |  |
|------------------------|--|
| :16R:TRADEDET          |  |
| :98A::SETT//20100903   | Settlement date                            |
| :98A::TRAD//20100901   | Trade date                                 |
| :35B:ISIN SI1234567890 | Identification of the financial instrument |
| :16S:TRADEDET          |  |

**Sequence C – Financial Instrument/Account**

|                       |  |
|-----------------------|--|
| :16R:FIAC             |  |
| :36B::SETT//UNIT/123, | Quantity of Financial Instrument to be settled |
| :97A::SAFE//7777770   | Safekeeping account to be debited              |
| :16S:FIAC             |  |

**Sequence E – Settlement details**

|                                 |   |
|---------------------------------|---|
| :16R:SETDET                     |   |
| :22F::SETR//TRAD                |   |
| :16R:SETPRTY                    |   |
| :95P::REAG//RERESI22            | Receiving agent BIC                                   |
| :16S:SETPRTY                    |   |
| :16R:SETPRTY                    |   |
| :95Q::BUYR//JOHN DOE            | Buyer   |
| :97A::SAFE//1234565             | Buyer's account at the receiving agent to be credited |
| :16S:SETPRTY                    |   |
| :16R:SETPRTY                    |   |
| :95P::PSET//KDDSSI22            | Place of settlement                                   |
| :16S:SETPRTY                    |   |
| :16R:CSHPRTY                    |   |
| :95P::ACCW//DDDDSI22            | BIC of Bank operating cash account                    |
| :16S:CSHPRTY                    |   |
| :16R:CSHPRTY                    |   |
| :95Q::BENM//ADAM SMITH          | Beneficiary of money                                  |
| :97E::CASH//SI56123412341234123 | IBAN  |
| :16S:CSHPRTY                    |   |
| :16R:AMT                        |   |
| :19A::SETT//EUR 100,            | Amount and currency                                   |
| :16S:AMT                        |   |
| :16S:SETDET                     |   |



3. **MT548** sent by CSD (KDDSSI22) to receiving agent (RERESI22) after successful matching specifying reference used in money transfer.

**Sequence A – General Information**

|                           |  |
|---------------------------|--|
| <b>:16R:GENL</b>          |  |
| <b>:20C::SEME//001234</b> |  |
| <b>:23G:INST</b>          |  |

**Subsequence A1 – Linkages**

|                              |  |
|------------------------------|--|
| <b>:16R:LINK</b>             |  |
| <b>:20C::RELA//123456789</b> |  |
| <b>:16S:LINK</b>             |  |

**Subsequence A2 – Status**

|                         |  |
|-------------------------|--|
| <b>:16R:STAT</b>        |  |
| <b>:25D::SETT//PEND</b> |  |

**Subsequence A2a – Reason**

|                                    |  |
|------------------------------------|--|
| <b>:16R:REAS</b>                   |  |
| <b>:24B::PEND//MONEY</b>           |  |
| <b>:70D::REAS//011230-00001858</b> | Connects settlement instructions and MT103+ payment. This value must be copied verbatim into field :70:/RFB/ of MT103+ in payment for the financial instruments. |
| <b>:16S:REAS</b>                   |  |
| <b>:16S:STAT</b>                   |  |
| <b>:16S:GENL</b>                   |  |



4. **MT103+** sent by buyer's bank (CCCCSI22) to CSD (KDDSSI22) with payment for the financial instrument.

This message **must contain in field :70:/RFB/verbatim copy of reference from MT548 field :70D::REAS//** to facilitate pairing of payment with settlement instruction.

|   |   |
|---|---|
| :20:123456  |   |
| :23B:CRED   |   |
| :32A:010910EUR 100,   |   |
| :33B:EUR 100,   |   |
| :50K:/SI56112233445566777<br>JOHN DOE<br>STREET 1<br>LJUBLJANA          |   |
| :59:/SI56010000007900054<br>KDD d.d.<br>TIVOLSKA CESTA 048<br>LJUBLJANA |   |
| :70:/RFB/011230-00001858  | Copy of reference from MT548 field :70D::REAS// |
| :71A:SHA  |   |

5. **MT103+** sent by CSD (KDDSSI22) to seller's bank (DDDDSI22)

|  |  |
|--|--|
| :20:ABCD123  |  |
| :23B:CRED  |  |
| :32A:010910EUR 100,  |  |
| :33B:EUR 100,  |  |
| :50K:/SI56010000007900054<br>KDD d.d.<br>TIVOLSKA CESTA 048<br>LJUBLJANA |  |
| :52A:KDDSSI22XXX   |  |
| :59:/SI56123412341234123<br>ADAM SMITH                                   |  |
| :70:123456<br>OTC - DVP  |  |
| :71A:SHA   |  |



6. **MT545** sent by CSD (KDDSSI22) to receiving agent (RERESI22) after successful settlement

**Sequence A – General Information**

|                       |  |
|-----------------------|--|
| :16R:GENL             |  |
| :20C::SEME//00123     |  |
| :23G:NEWM             |  |
| :16R:LINK             |  |
| :20C::RELA//123456789 |  |
| :16S:LINK             |  |
| :16S:GENL             |  |

**Sequence B – Trade details**

|                        |  |
|------------------------|--|
| :16R:TRADEDET          |  |
| :98A::ESET//20100903   | Effective settlement date                  |
| :98A::TRAD//20100901   | Trade date                                 |
| :35B:ISIN SI1234567890 | Identification of the financial instrument |
| :16S:TRADEDET          |  |

**Sequence C – Financial instrument/Account**

|                       |  |
|-----------------------|--|
| :16R:FIAC             |  |
| :36B::ESTT//UNIT/123, | Quantity of Financial Instrument settled |
| :97A::SAFE//1234565   | Safekeeping account credited             |
| :16S:FIAC             |  |

**Sequence E – Settlement details**

|                        |  |
|------------------------|--|
| :16R:SETDET            |  |
| :22F::SETR//TRAD       |  |
| :16R:SETPRTY           |  |
| :95P::DEAG//DEDESI22   | Delivering agent BIC                             |
| :16S:SETPRTY           |  |
| :16R:SETPRTY           |  |
| :95Q::SELL//ADAM SMITH | Seller   |
| :97A::SAFE//777770     | Seller's account at the delivering agent debited |
| :16S:SETPRTY           |  |
| :16R:SETPRTY           |  |
| :95P::PSET//KDDSSI22   | Place of settlement                              |
| :16S:SETPRTY           |  |
| :16R:AMT               |  |
| :19A::ESTT//EUR 100,   | Amount and currency                              |
| :16S:AMT               |  |
| :16S:SETDET            |  |



7. **MT547** sent by CSD (KDDSSI22) to delivering agent (DEDESI22) after successful settlement

**Sequence A – General Information**

|                    |  |
|--------------------|--|
| :16R:GENL          |  |
| :20C::SEME//00124  |  |
| :23G:NEWM          |  |
| :16R:LINK          |  |
| :20C::RELA//ABCDEF |  |
| :16S:LINK          |  |
| :16S:GENL          |  |

**Sequence B – Trade details**

|                         |  |
|-------------------------|--|
| :16R:TRADEDET           |  |
| :98A::ESET//20100903    | Effective settlement date                  |
| :98A::TRAD//20100901    | Trade date                                 |
| :35B::ISIN SI1234567890 | Identification of the financial instrument |
| :16S:TRADEDET           |  |

**Sequence C – Financial instrument/Account**

|                       |  |
|-----------------------|--|
| :16R:FIAC             |  |
| :36B::ESTT//UNIT/123, | Quantity of Financial Instrument settled |
| :97A::SAFE//7777770   | Safekeeping account debited              |
| :16S:FIAC             |  |

**Sequence E – Settlement details**

|                      |   |
|----------------------|---|
| :16R:SETDET          |   |
| :22F::SETR//TRAD     |   |
| :16R:SETPRTY         |   |
| :95P::REAG//RERESI22 | Receiving agent BIC                             |
| :16S:SETPRTY         |   |
| :16R:SETPRTY         |   |
| :95Q::BUYR//JOHN DOE | Buyer   |
| :97A::SAFE//1234565  | Buyer's account at the receiving agent credited |
| :16S:SETPRTY         |   |
| :16R:SETPRTY         |   |
| :95P::PSET//KDDSSI22 | Place of settlement                             |
| :16S:SETPRTY         |   |
| :16R:AMT             |   |
| :19A::ESTT//EUR 100, | Amount and currency                             |
| :16S:AMT             |   |
| :16S:SETDET          |   |